

CASE STUDY



Project Overview

The Field of Dreams is a construction project for a beverage manufacturing and distribution facility in Swanbank, Queensland. The site needed a robust facility to process over 20 million cases of alcoholic and non-alcoholic beverages. It also required ample power and space to accommodate the packaging, warehousing, and distribution of these beverages.

IPD had the exciting opportunity to support the project's electrical contractor, CV Services Group, by supplying Powerduct Busways for the facility's cabling system. We successfully designed and delivered the busducts to the project by December of 2023.

Customer challenge

CV Services is an accredited electrical service provider contracted by the builder of the Field of Dreams Project. They were challenged to ensure that the facility met the high demands of the manufacturing process and that the power supplies operated continuously.

During the construction period, CV Services needed busducts to feed multiple large switchboards. Due to a long cable run, the weight would have caused a lot of strain on the building structure and took up more space than intended. CV Services needed a cost-effective and space-saving solution.

PROJECT

The Field of Dreams
Project

FIND OUT MORE

www.ipd.com.au

Project Scope

To address the project challenges, CV Services reached out to IPD to design and deliver Powerduct Busways that would fit the unique needs of the project. Due to our experienced engineering team, fair pricing, and quick delivery turn around, CV Services trusted us to deliver the project on time.

One of the main concerns for the project was maintaining a reliable power supply for the facility, as well as lowering the voltage drops by switching from cable, in order to mitigate the long cable run. Although a compact solution was preferred, it still needed enough power for the facility's robust and demanding machinery.

Over the span of 6 months, IPD was able to create and deliver a cost-efficient design to support the long cable run. Led by Alvin Villamor, our Busduct Solutions Engineer, the team successfully designed and delivered the Powerduct Busways and helped provide a reliable power supply for The Field of Dreams Project.



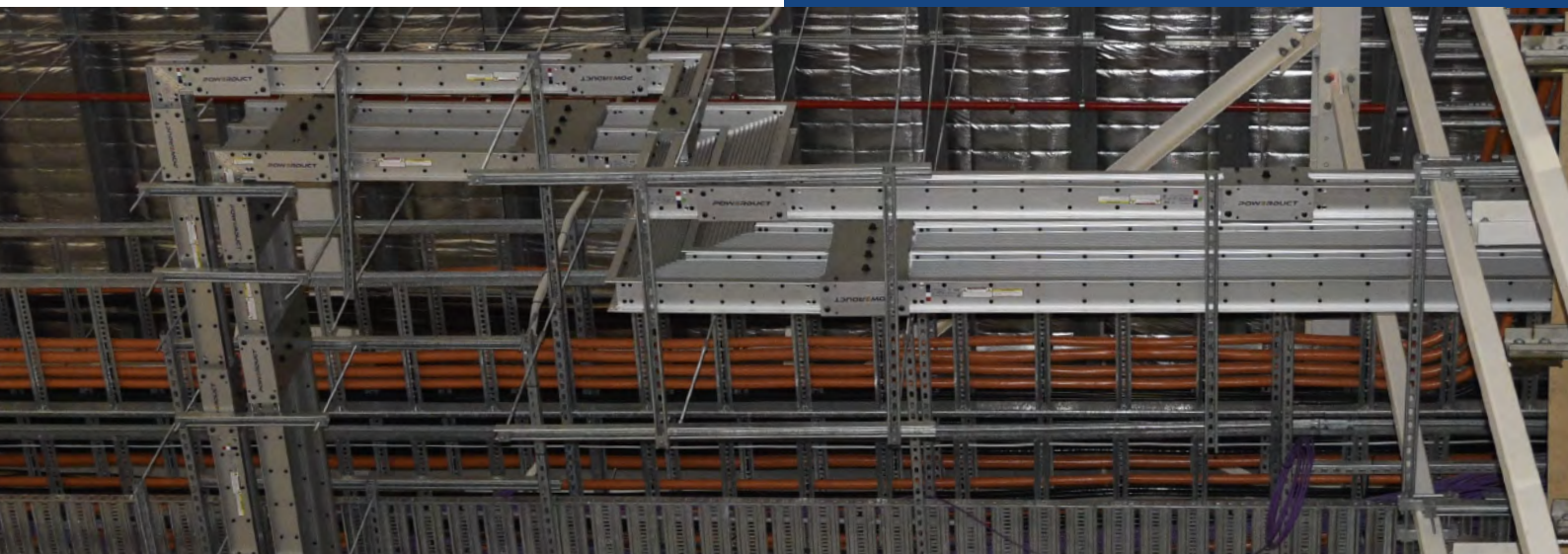
Outcome

The Field of Dreams Project's electrical systems were completed successfully with IPD's help. By designing the busducts, IPD was able to halve the weight and significantly reduce the space taken up by the cables. Overall, this also helped CV Services save on costs for the installation and material.

CV Services was very satisfied with IPD's service. They commended IPD for finding a suitable design to fit the project's specific needs. They were also happy with how IPD handled the project, coordinating effectively with a small, global team.

As Luke Matthews, Construction Manager for CV Services, noted, "It's quite complicated to get the design to suit the project, and it takes a lot of coordination to get it right. And it was – it did come in the way that we hoped it would."

Our collaboration with CV Services helped meet the project objectives, demonstrating IPD's proficiency and readiness to deliver quality services.



Experience Better

customerservice@ipd.com.au | 1300 556 601 | ipd.com.au

